



Using SMART Clickers with Study Island

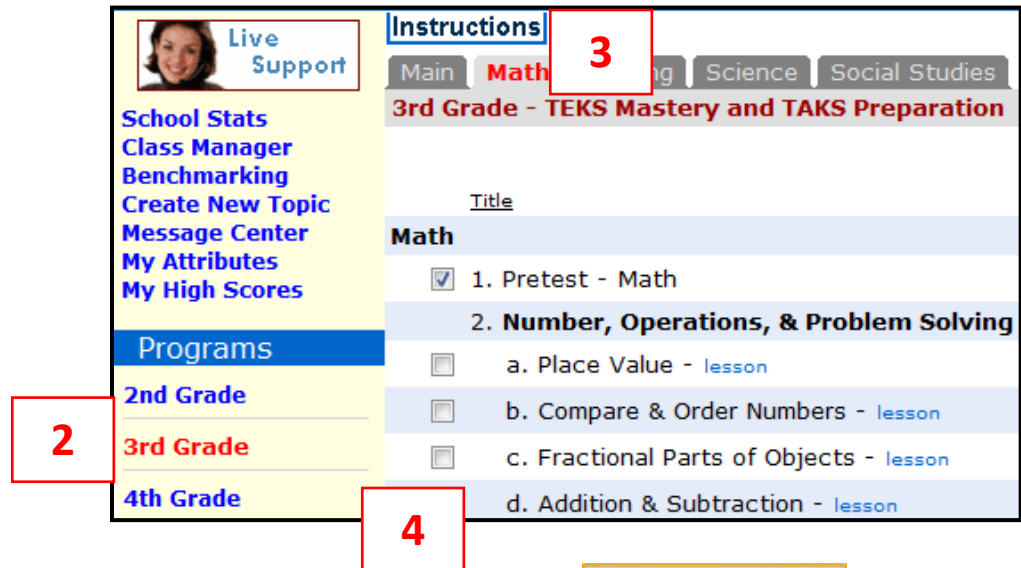
This document is designed to model how to utilize “SMART” CRS clickers with Study Island. Make sure you have loaded the SMART program on your computer prior to using with Study Island.

1. Log in to Study Island as a teacher.

2. Select a grade level

3. Select a subject

4. Select a topic.



5. In the session options screen, select **Classroom Response Systems**.



6. Select **SMART Response Interactive Response Systems** and click **Next**.



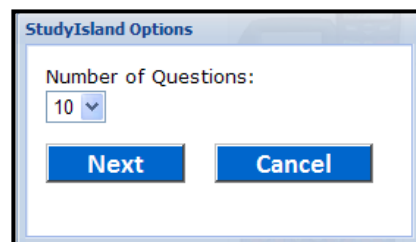
SMART Response™ Interactive Response System

Vendor Information: <http://www.smarttech.com/>

SMART Response Options

Select version: SMART Response 2010 SP1

7. Choose the number of questions and click **Next**.



8. Select the class with which you will be working from the dropdown box. Their names will be displayed below along with the corresponding “clicker” they will have. You can adjust the numbers assigned by clicking in the box and typing in the number you’d like a student to use for this session.

STUDY ISLAND
peter, gretchen - Wed 09/24/2008

Hints & Tips ...

Select Class

cps SESSION sample

| Name | Pad ID |
|---|--------|
| tinker bell (tinker.bell@gretchen's) | 1 |
| miley cyrus (miley.cyrus) | 2 |
| leslie miley's friend (leslie.miley's friend) | 3 |
| hannah montana (hannah.montana) | 4 |

Title of the class

What “clicker” students are assigned to.

Note: SMART clickers do not have the Pad ID's located on them. In order to find this number you will click need to fill in “fake” numbers and then click Next.

9. When the screen loads, you will need to click Detect Pad Ids.

STUDY ISLAND
Babbage, Charles - Wed 05/05/2010

91HoustonAstros_All

HELP | CONTACT | LOG OUT

Previous Next Explanation Show Correct Answer Question Results Detailed Results Printable Worksheet Save for Later End Session

Detect Pad Ids

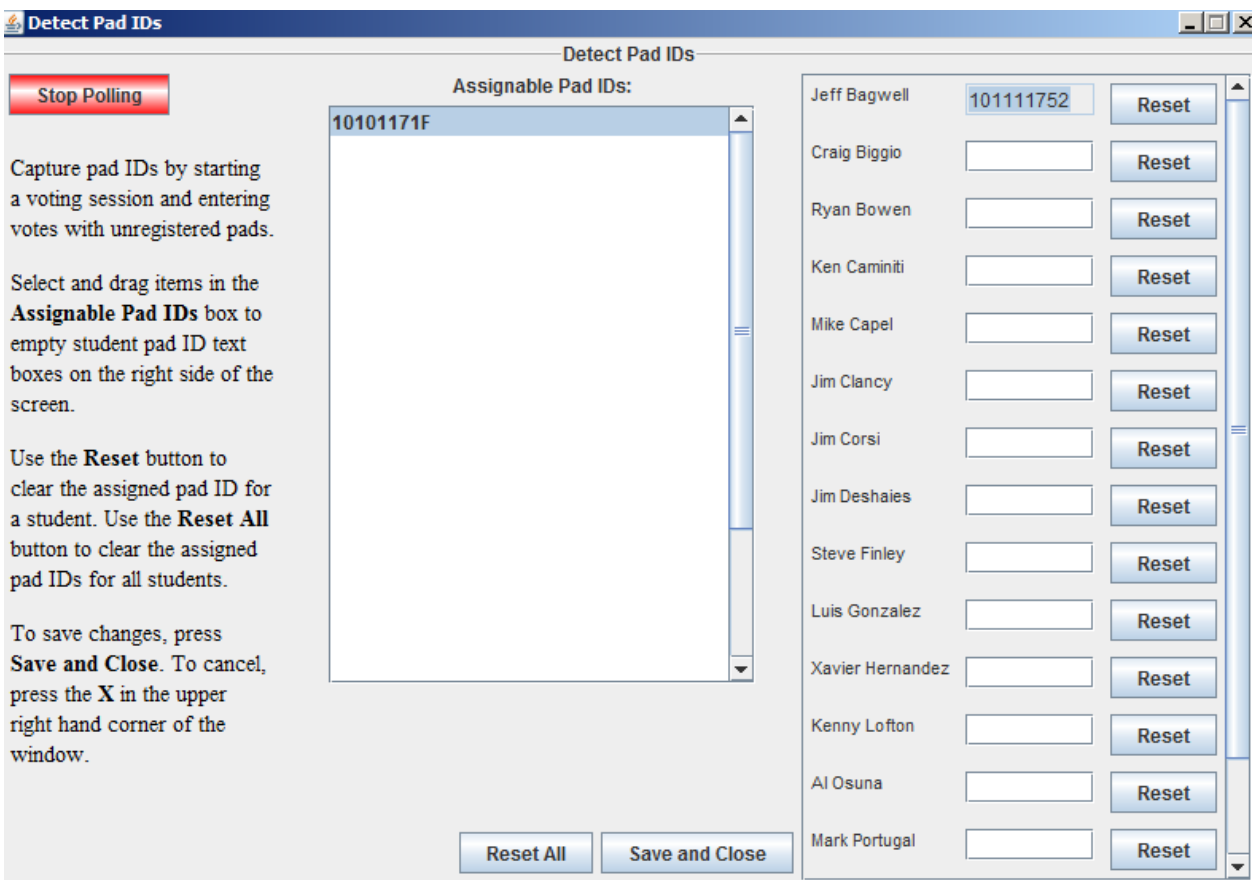
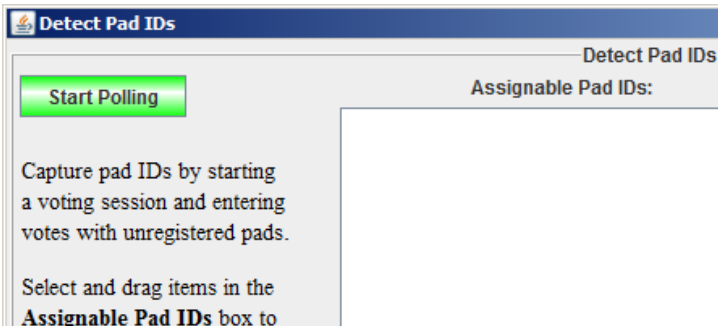
Teacher Led Student Paced

Receiver Status: Connected to Receiver

SoftClicker Status: My Address: 10.4.1.239 My Port: 9090 Passkey: 6copal8

10. Click on “Start Polling” and then click a button on each clicker like you were answering a question. You will see that clicker number appear on the screen. Select and drag items in the **Assignable Pad IDs** box to empty student pad ID text boxes on the right side of the screen. Use the **Reset** button to clear the assigned pad ID for a student. Use the **Reset All** button to clear the assigned pad IDs for all students. To save changes, press **Save and Close**. To cancel, press the X in the upper right hand corner of the window.

Tip: You may want to write the ID number on the clicker for future reference.



11. Pass out the CRS clickers based on the numbers on the devices.

Selecting Teacher Led Session

STUDY ISLAND
peter, gretchen - Wed 09/24/2008

cps SESSION sample

Save for Later Printable Worksheet

Teacher Led Student Paced

Start Voting Question Results Detailed Results End Session

What is Teacher Led?

This format allows a teacher to direct an interactive teaching activity with questions that can be projected on a big screen for all the class to see.

How to Use a TEACHER LED Session

1. Select this session by clicking on the small circle next to "Teacher Led" at the top of your screen.
2. Click Start Voting, and have the students answer the question using their "Clickers".
3. Click Stop Voting and then reveal the answer to the students by clicking the "Show Correct Answer" button when everyone has responded.

Explorer
and.com/CPISInteract.cfm?lchd=18&CFID=249107358&CFTOKEN=80531083

ISLAND

cps SESSION sample

Save for Later Printable Worksheet

1.

When no one has answered the question, the boxes will be light blue.

Principles of Design

How does contrast between black and white impact this painting?

A It makes the focal point disappear.
B It makes a repeating pattern in shapes.
C It creates symmetry in the painting.
D It makes the men look three-dimensional.

Explanation Show Correct Answer

Start Voting Previous Next Question Results Detailed Results End Session

SSION sample

Save for Later Printable W

Principles of Design

1.

How does contrast between black and white impact this painting?

A It makes the focal point disappear.
B It makes a repeating pattern in shapes.
C It creates symmetry in the painting.
D It makes the men look three-dimensional.

Explanation Show Correct Answer

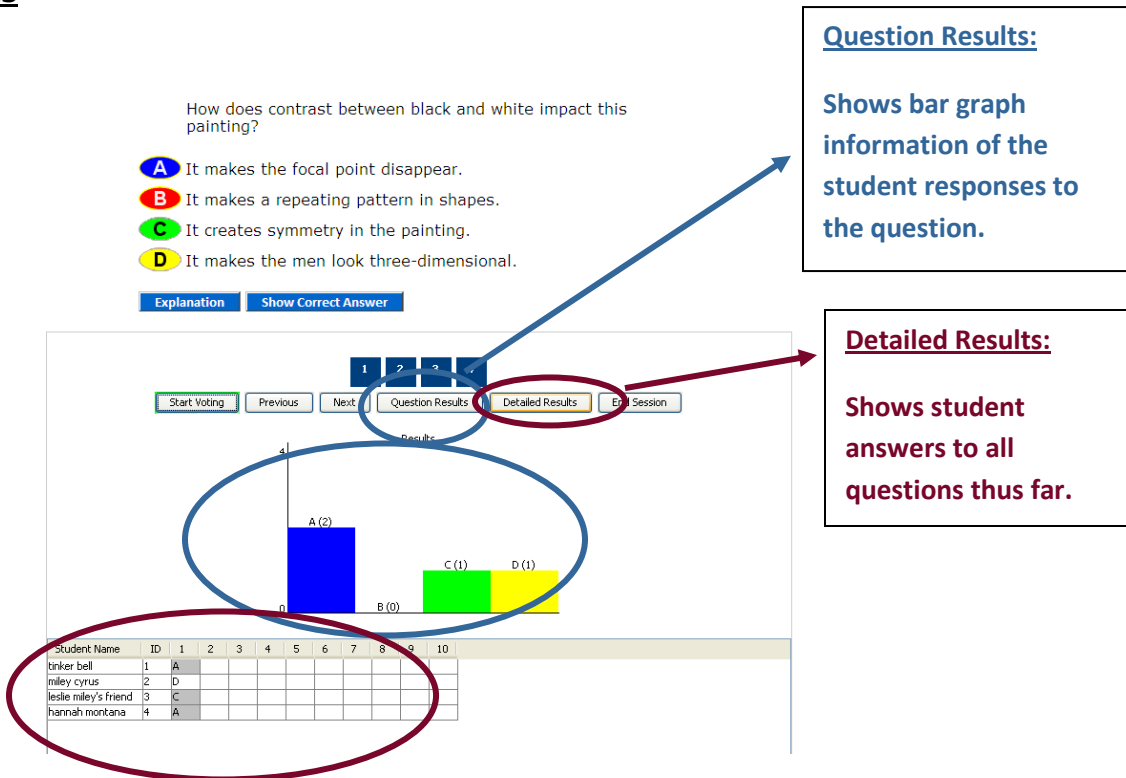
1 2 3

Stop Voting Previous Next Question Results Detailed Results End Session

When a student answers, his or her clicker number will turn dark blue.

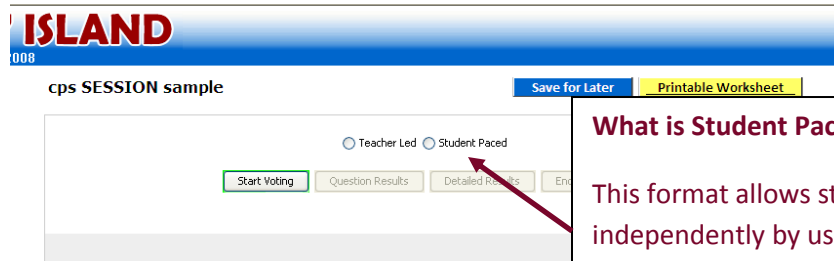
4. When your students have completed all of the questions, you can end your session by clicking on the “End Session” button or on the “Save for Later” button at the top of the page. “End Session” will send your stats to Study Island and you will not be able to get back to the same session again. “Save for Later” allows you to end this session and come back to it later.

Other Features



How to use a STUDENT PACED Session

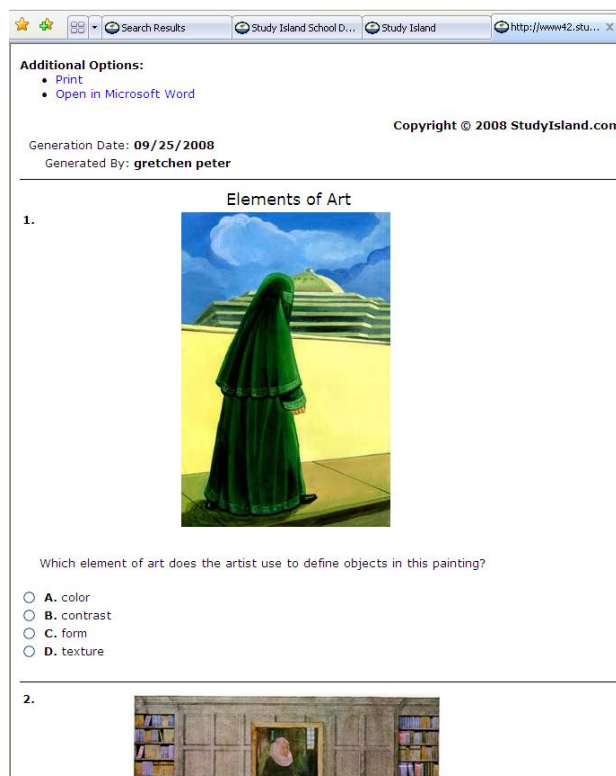
1. Select this session by clicking the circle next to “Student Paced” at the top of your screen.



What is Student Paced?

This format allows students to work independently by using a clicker to answer questions from a printable worksheet.

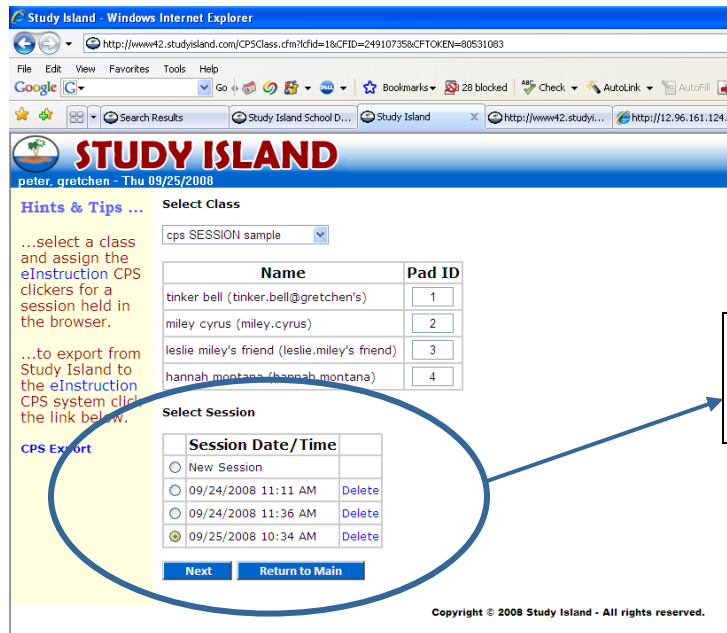
2. Click on the button for “Printable Worksheet”.
3. You will be taken to a new window or tab (depending on your internet browser preferences) to select the manner in which you’d like to print the worksheet for students:



4. Go to the previous tab/window (depending on your own personal browser settings) and select “Save for Later”
5. Make copies of your worksheets and distribute the worksheets to students.

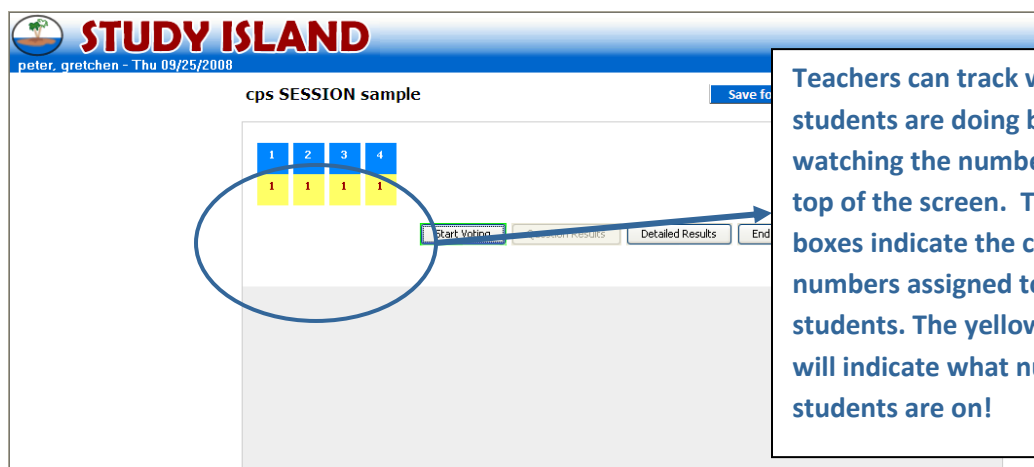
- Next, log back in to your Study Island CPS session using the steps on the first page of this document, but this time select the session from the list below the students names where the worksheet was printed/created. (See picture below)

NOTE: If you will be printing worksheets to use with students during the class session in which you'd like students to use the CPS Student Paced Session, skip numbers 4 and 6.



Select the session in which the printable worksheet was created.

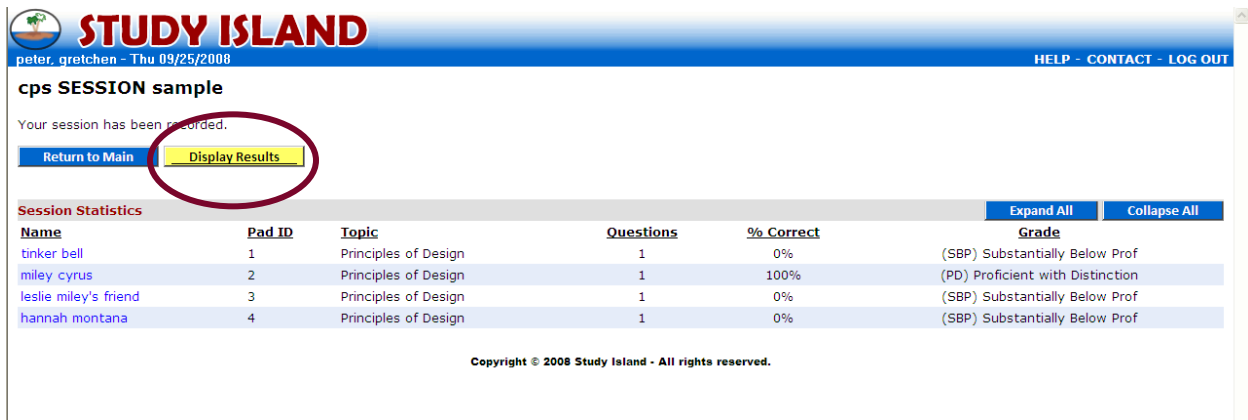
- Select "Start Voting" to allow students to begin taking the worksheet using clickers. This will record the students answers.



- After everyone has concluded, select "End Session" or "Save for Later".

Gathering Data from your CRS Session

1. First, click “End Session”. By doing this, you will be exporting stats into Study Island.
2. Next, click on “Display Results” to see the performance results upon completion.



The screenshot shows the Study Island interface. At the top, there is a blue header with the Study Island logo and the text "STUDY ISLAND". Below the header, it says "peter_gretchen - Thu 09/25/2008" and "HELP - CONTACT - LOG OUT". The main content area is titled "cps SESSION sample" and says "Your session has been recorded." Below this, there are two buttons: "Return to Main" and "Display Results". The "Display Results" button is highlighted with a red circle. Below the buttons, there is a table titled "Session Statistics" with columns: Name, Pad ID, Topic, Questions, % Correct, and Grade. The table contains four rows of data. At the bottom of the page, there is a copyright notice: "Copyright © 2008 Study Island - All rights reserved."

| Name | Pad ID | Topic | Questions | % Correct | Grade |
|-----------------------|--------|----------------------|-----------|-----------|----------------------------------|
| tinker bell | 1 | Principles of Design | 1 | 0% | (SBP) Substantially Below Prof |
| miley cyrus | 2 | Principles of Design | 1 | 100% | (PD) Proficient with Distinction |
| leslie miley's friend | 3 | Principles of Design | 1 | 0% | (SBP) Substantially Below Prof |
| hannah montana | 4 | Principles of Design | 1 | 0% | (SBP) Substantially Below Prof |

3. To see the Stats in more detail, click “Expand All” at the top of the page. You may want to print this screen as you will not be able to return to this exact screen again.
4. When finished, click “Return to Main”. The stats will automatically be recorded in Study Island and accessible in your School Stats reports!